



D1A Men's Rugby - College Rugby Association of America (CRAA)

1231 Franklin Mall
Suite 222
Santa Clara, CA 95050
(123) 456-7890

D1A Men's Handbook

(Creator: September 2022)

CODE OF CONDUCT

WHO WE ARE

CRAA

D1A

GOVERNANCE

CRAA

Commissioners

Committees

MEMBERSHIP

CRAA

USA Rugby

Dual Membership

ELIGIBILITY

Student-Athletes

Coach

COMPETITION

General

Conference

Out-of-Conference

Cross-Over

Post Season

Rankings System

Seasonality

MLR Academy Windows

DISCIPLINE

Process

Discipline Committee

Appeals

Adjustments

VIDEO AND BROADCAST REQUIREMENTS

Video for team, league and discipline use

Broadcast Requirements

CODE OF CONDUCT

All Unions, Associations, Rugby Bodies, Clubs and Persons:

- must ensure that the game is played and conducted in accordance with disciplined and sporting behavior
- shall cooperate in ensuring that the spirit of the Laws of the Game are upheld and encourage players to refrain from committing acts of foul play
- shall not repeatedly breach the Laws of the Game
- shall accept and observe the authority and decisions of Match Officials and all other rugby disciplinary bodies, subject to Regulation 17
- shall not publish or cause to be published criticism in the manner in which a Match Official handled a Match or any other rugby disciplinary body handled or resolved any dispute or disciplinary matter resulting from a breach of the regulations or Laws of the Game
- players and team officials represent themselves, their club, D1A, CRAA and USA Rugby. Players and team officials shall not exhibit nor tolerate actions or behavior, on or off the pitch, that would adversely affect the image of you, your club, D1A, CRAA and USA Rugby or, most importantly, the game.
- shall not commit a breach of any of the World Rugby Regulations;
- shall promote the reputation of the game and take all possible steps to prevent it from being brought into disrepute;
- shall not abuse, threaten or intimidate a Match Official, whether on or off the field of play;
- shall not do anything which is likely to intimidate, offend, insult, humiliate or discriminate against any other person on the ground of their religion, race, sex, sexual orientation, color, or national or ethnic origin;
- CRAA and its competitions are under an obligation to comply with and to ensure that each of its members complies with this Code of Conduct and adopt procedures to monitor compliance with and impose sanctions for breaches of the Code of Conduct by Persons under its jurisdiction.

WHO WE ARE

College Rugby Association of America

The College Rugby Association of America (CRAA) is a USA Rugby sanctioned competition that includes premier divisions within Men's and Women's Collegiate rugby. The competition includes Men's D1A, Women's D1 Elite, Women's D1 and Women's D2. CRAA is committed to creating the best possible experience for student-athletes, keeping commercial resources in the collegiate game, and creating experiences for our members to engage their academic institutions and alumni.

D1A

Division 1-A Rugby (formerly known as the College Premier Division) is the highest level of college rugby within the United States and is administered by CRAA. Division 1-A rugby is modeled after NCAA athletic competitions, divided into eight conferences: Big10, Mid-South, Rocky Mountain, California, Red River, Rugby East and PAC. Several independent programs are included in D1A, but are not part of a conference due to geography.

GOVERNANCE

CRAA

CRAA is governed by the bylaws of the organization. A link to the CRAA bylaws can be found in the appendix of this document.

D1A COMMISSIONERS

D1A will be organized by conference commissioners and led by the D1A commissioner. The D1A commissioner will be elected by the conference commissioners and will stand for a 2-year term with no term limit. Conference Commissioners will represent the following conferences: Big10, Mid-South, Rocky Mountain, California, Red River, Rugby East and PAC. New conferences can be added to the D1A competition with the majority approval of the conference commissioners and confirmation by the D1A Commissioner.

The D1A Commissioner is responsible for upholding the integrity and organization of the competition. This person is responsible for oversight of the conference commissioners, communication-related to the competition and CRAA, organizing scheduled meetings (bi-monthly or more frequently if required) and the organizational structure of the competition. This includes electing committee chairs for competition, eligibility and discipline.

The D1A Conference Commissioners are responsible for the oversight and organization of their respective conferences. This person is responsible for communication-related to the conference, D1A competition and CRAA, membership, eligibility, organizing scheduled meetings, oversight of match reporting (CMS), film requirements/deadlines and the competition schedule.

COMMITTEES

D1A shall have two committees consisting of Competition and Discipline.

The Competition Committee shall consist of five members, one appointed as the chairperson. Members of the competition committee shall be independent parties acting in the best interest of the overall competition, without bias. Coaches and administrators who are participating in the competition shall not sit on the competition committee.

The Discipline Committee shall consist of 3-5 members with a dedicated discipline officer (DDO) presiding over hearings. Members of an assembled discipline panel shall be members of the committee selected by the DDO who do not have any real or perceived conflicts as it relates to the case being heard. Discipline case documents and decisions will be made publicly available. CRAA operates within the laws of the game of rugby, as prescribed by World Rugby and specifically Regulation 17 as it relates to foul play. However, suitable adjustments to cater for the imperatives of the CRAA competitions and domestic structure can be adopted by CRAA EXCO and confirmed with USA Rugby. The CRAA Discipline Process and Policies can be found in the appendix of this document.

MEMBERSHIP

USA RUGBY

All teams, players, coaches and administrators must be members of the National Governing Body, USA Rugby. Membership registration is annual and begins on September 1 and ends on August 31 of each year. USA Rugby Membership fees provide the following to players, coaches and administrators:

Coaches - Accident and liability coverage, background screening, SafeSport certifications, coaching certification and compliance, sanctioned to coach within USA Rugby training and competition, access to training and education materials.

Players - Accident and liability coverage for friendly and sanctioned competitions with USA Rugby clubs, sanctioned for all levels of participation within USA Rugby.

Administrators - Accident and liability coverage, background screening, SafeSport certifications, administrator certification and compliance, sanctioned for all levels of participation within USA Rugby, access to training and education materials.

CRAA

All players must be members of CRAA and must be members in good standing of USA Rugby. CRAA player fees are allocated to funding the organization's operational costs and events. Membership registration is annual and begins on September 1 and ends on August 31 of each year. Cost: \$15

D1A

All teams must be registered with CRAA and members in good standing of USA Rugby. An annual "Team Fee" is collected to cover the operational costs of the competition. Membership registration is annual and begins on September 1 and ends on August 31 of each year, covering CRAA XV's and 7s competitions. Cost: \$2500

D1A Members who wish to compete for CRAA National Championships in XV's or 7s must declare their intent on September 1 and refrain from playing in any other "championship" competitions during the competition's calendar year (Sept 1 -Aug 31) Special cases for bowl or championship competitions require the written consent of the CRAA Exco, D1A Commissioner and Conference Commissioners.

ELIGIBILITY

KEY DATES FOR ELIGIBILITY AND WAIVERS

September 15 (Fall)

February 15

D1A STUDENT-ATHLETE ELIGIBILITY REGULATIONS

I. Seasons of Competition: Five-Year Rule.

- A.** A student-athlete shall not engage in more than five seasons of D1A competition.
- B.** An institution shall allow a student-athlete to represent their institution in a D1A competition under the following guidelines and time periods specified below:
 - 1.** Five-Year Rule. A student-athlete shall complete his seasons of participation within five calendar years from the beginning of the semester or quarter in which the student-athlete first registered for a minimum full-time program of studies in a collegiate institution, with time spent in the armed services or on official religious missions being exempted (as noted below). For international students, service in the armed forces of the student's home country or on an official religious mission is not considered equivalent to such service in the United States.
 - a)** Determining the Start of the Five-Year Period. For purposes of starting the count of time under the five-year rule, a student-athlete shall be considered registered at a collegiate institution when the student-athlete initially registers in a regular term (semester or quarter) of an academic year for a minimum full-time program of studies, as determined by the institution, and attends the student's first day of classes for that term. If a student athlete is not enrolled and playing at a club the clock starts.
 - b)** Exceptions to the Five-Year Rule. Time spent in the armed services or on official religious missions are exceptions to the application of the five-year rule. A maximum of five years of active military service and two years of an official religious mission may be exempted from the five-year rule.
 - (1)** Elapsed Time/Service to Enrollment. If a student-athlete enrolls in a regular term of a collegiate institution at the first opportunity following completion of any one of the commitments, the elapsed time (the exact number of calendar days) between completion of the commitment and the first opportunity for enrollment may be added to the exact number of days served on active duty in the armed services, with foreign aid services or on official religious missions and will not count toward the student-athlete's five years of eligibility. It is not permissible to extend the five-year period by any additional time beyond the first opportunity to enroll (the opening day of classes of the first regular term at the institution in which the student-athlete enrolls as a regular student immediately following the termination of the active-duty commitment).

(2) Delayed Enrollment- A student-athlete who does not play rugby and does not enroll in a collegiate institution as a full-time student in a regular academic term during a one-year time period after his high school graduation date or the graduation date of his class whichever occurs earlier, shall be charged with one season of intercollegiate eligibility for each academic year after the one-year time period (the next opportunity to enroll after one academic year has elapsed) and prior to full-time collegiate enrollment.

II. Requirement for Competition - To be eligible for competition, a student-athlete shall be enrolled in at least a minimum full-time program of studies, which shall not be less than 12 semester or quarter hours.

III. Exceptions - The following exceptions to the minimum 12-semester or 12-quarter-hour enrollment requirement are permitted:

A. Final Semester/Quarter. A student-athlete may compete while enrolled in less than a minimum full-time program of studies, provided the student is enrolled in the final semester or quarter of the baccalaureate program and the institution certifies that the student is carrying (for credit) the courses necessary to complete degree requirements.

B. Semester Institutions. A student-athlete who attends a semester-system institution and who graduates at the end of the winter semester may compete in the D1A championship that occurs during the same academic year following the completion of the spring semester.

C. Quarter Institutions. A student-athlete who attends a quarter-system institution and who graduates at the end of the winter quarter may compete in the D1A championship that occurs during the same academic year following the completion of the winter quarter.

D. Post Bach or Graduate Program. A student-athlete may compete while enrolled in a full-time graduate program or post bachelors program as defined by the institution provided that the student-athlete has time left on their five year clock.

E. Transfer Students. A student-athlete may transfer institutions into full-time baccalaureate program or post bachelors program as defined by the institution provided that the student-athlete has more than one year left on their five year clock and before the competitive cycle begins.

1. Student-athletes must be in good-standing as defined by the university

IV. International Students

A. Amateur Status. All international student athletes must be vetted to meet amateur standards prior to competing.

B. Post Graduate. International Students who have received baccalaureate degrees from international institutions are not eligible for participation.

C. Transfers. Qualifying international students who have not received degrees, have more than one year of eligibility and who meet amateur standards shall be granted waivers.

- V.** Temporary Hardship Waiver Policy A student-athlete may be granted an additional year of competition in D1A by the eligibility committee. This procedure will only be in place for the 2019-2020 playing season, after that time no waiver process will be available.
- A.** Waiver Criteria. This waiver is designed to provide a student-athlete with the opportunity to participate in their last season of D1A competition, if they have exhausted their eligibility under the new 5- year eligibility rule. This waiver may be granted, based upon objective evidence, for reasons that would cause a hardship or due to conditions beyond the control of the student-athlete and the institution. The following items will be taken under consideration when looking to grant a waiver: Years of rugby competitions participated, Anticipated date of graduation, Medical hardship
- B.** Application for Waiver. To apply for the waiver the following items must be submitted to the Eligibility Director at eligibility@d1arugby.com by October 15, 2019 for Fall eligibility and February 15, 2020 for Spring eligibility:
- 1.** Institutions must write a letter to D1A Rugby for review by the eligibility committee and must include the athletes date of birth, anticipated graduation date, a timeline of every year after they have graduated from High School, and the specific reason for the waiver request.
 - 2.** Provide a statement from the SA describing the facts and circumstances surrounding this request, including the impact of any mitigating circumstances (e.g., personal hardship) that may occur if the waiver was not granted.
 - 3.** In addition to the statement, SA needs to submit any and all supporting documents.

(These policies are in effect in all matches and games played by members and participants in D1A, to include but not limited to, friendly matches, scrimmages, tournaments of any kind and all sanctioned events.)

AMATEURISM

VI. Amateurism

Student-athletes must meet and remain in compliance with all applicable amateur standards. A student-athlete is not eligible for participation in collegiate rugby if they have ever taken pay for competing in any form of rugby.

- A.** A student who represents a school in an interscholastic sport shall be an amateur in that sport. An amateur athlete is one who participates in the activities of his/her sport for the purpose of deriving the physical, mental and social benefits organized sports competition has to offer and not for any present or future pecuniary or commercial gains. Since the student is considered an integral member of the student body, a clear line of distinction between educationally based athletics and professional sports must exist and be maintained at all times.

It shall be the shared responsibility of school personnel, the athletes and their parents to maintain this clear line of distinction.

- B.** An athlete forfeits amateur status, and thus interscholastic athletic eligibility, if any of the following standards of amateurism are violated:
- 1.** Competing for money or other remuneration. Allowable travel, meals and lodging expenses may be accepted provided that these expenses are not conditioned on the individual's or team's place finish or performance or given on an incentive basis and such expenses are provided to all participants in the competition. EXCEPTION: If a student, who is competing in the amateur division within a competition where prize money is available, signs a Request for Retention of Amateur Status written declaration prior to the competition in which the student agrees that he or she will not accept any prize money. The student may accept allowable travel, meals and lodging expenses provided that these expenses are not contingent upon the student's individual or a team's finish or performance or given as an incentive to achieve a specific goal or performance. Receipt of expenses received by the athlete shall be reported to the D1A Rugby Eligibility Director, so as to determine whether or not the expenses are in excess of those reasonable amounts for travel, meals and lodging.
 - a)** Capitalizing on the athlete's fame by receiving money, merchandise or services of value outside of the [CRAA NIL Guidelines](#).
 - b)** Signing a contract or making a commitment of any kind to play professional athletics, regardless of its legal enforceability or any payment received. This prohibits signing a contract during the interscholastic athletics season that is dated after the completion of the athlete's interscholastic athletic eligibility;
 - c)** The faux signing of a contract or making an oral or written commitment of any kind to play professional athletics, regardless of its legal enforceability or any payment received. This includes social media posts and or any online/print publication claiming professional status.
 - (1)** Receiving, directly or indirectly, a salary, reimbursement of expenses, merchandise or services or any other form of financial assistance or benefits from a professional sports organization based upon athletics skills or participation. EXCEPTION: An athlete may receive reimbursement of expenses as per item for a professional tryout;
 - (2)** Competing or practicing with any professional athletics team, even if no pay or remuneration for expenses was received; or
 - (3)** Entering into an agreement with a sports or marketing agent (O.R.C. §§4771.01 et seq., outside of the [CRAA NIL Guidelines](#).

(4) A foreign academy development contract player may receive actual and necessary living expenses and tuition assistance from the academy provided the player is enrolled full-time in an accredited educational institution and is in good standing with the institution during the entire period for which the player is under contract. The player will not be eligible in any case if the enrollment with a USA college or university occurs in the final quarter/semester of the player's potential USA Rugby collegiate eligibility.

C. A school, team, or organization may provide actual and necessary expenses to players provided the expenses are a reasonable amount for travel, lodging, meals, apparel and equipment. This includes per diem offered during participation with recognized USA Rugby national or representative team assemblies and player-win bonuses offered during participation with the USA Rugby National Team.

The following activities do not jeopardize amateur status:

- A. Accepting a fee for instructing, supervising or officiating in an organized youth sports program or youth sports recreation
- B. Receiving school-sponsored membership or participation fees in youth serving agencies, athletic clubs, community recreation centers, instructional programs or camps, etc. provided such fees are paid directly to the University or college;
- C. Receiving an award, playing equipment or prize of monetary value which does not exceed the award amount authorized by the Association;
- D. Receiving all non-monetary benefits and awards provided to members of an Olympic team beyond actual and necessary expenses, including entertainment, equipment, clothing, long distance telephone service, Internet access, and any other item or service for which it can be demonstrated that the same benefit is available to all members of the nation's Olympic team or the specific sport Olympic team in question;
- E. Accepting funds that are administered by the United States Olympic Committee pursuant to its Operation Gold Program; or
- F. Participating in member school, charitable or educational promotions or fund-raising activities that involve the use of athletic ability by student-athletes to obtain funds (e.g., swimathons, lift-a-thons, shoot-a-thons) from donors, provided the student-athletes receive no compensation or prizes for their participation.

A high school student who loses amateur status/athletic eligibility may apply to the Association for reinstatement in the interscholastic program. Such appeals shall be handled by the Commissioner in accordance with the bylaws. If a student-athlete in one sport violates a provision of the amateur bylaw as detailed above, the student-athlete may represent the member school in a different sport.

b. A school, team, or organization may provide actual and necessary expenses to players provided the expenses are a reasonable amount for travel, lodging, meals, apparel and equipment. This includes per diem offered during participation with recognized USA Rugby national or representative team assemblies and player-win bonuses offered during participation with the USA Rugby National Team.

COACH

Teams must have a registered Level 200/World Rugby L1 coach certified and active (current and with all requirements of coaching accreditation) by USA Rugby. It is recommended that coaches have a Level 300/World Rugby L2 coaching credential.

COMPETITION

GENERAL

D1A will be governed by an independent competition committee appointed by the D1A commissioner. The Competition Committee shall consist of five members, one appointed as the chairperson. Members of the competition committee shall be independent parties acting in the best interest of the overall competition, without bias. Coaches and administrators who are participating in the competition shall not sit on the competition committee.

The competition committee is responsible for:

- Annual review of the overall competition structure
- Recommendation for the postseason competition structure
- Managing the ranking system and making recommended adjustments annually
- Postseason seeding
- Managing the ongoing competition structure, reviewing complaints and issuing sanctions when necessary

Teams participating in the D1A competition must adhere to the following rules:

- Adherence to eligibility requirements and proper filing of eligibility forms
- Submit matchday rosters in CMS 24-hours prior to the scheduled match
- Completion of CMS within 8-hours of the completion of matches
- Video must be uploaded to an online service (Vimeo, YouTube, etc.) within 24 hours of the conclusion of the match and available for viewing by the opposition, match commissioners and discipline officer. (see Video & Broadcast Requirements section)

If a team does not fulfill these requirements, they are subject to sanctions by the competition committee. These sanctions could result in: removal from rankings, removal from the conference, and/or suspension from future postseason play in 7s and XVs.

CONFERENCES

Conference Commissioners will represent the following conferences: Big10, Mid-South, Rocky Mountain, California, Red River, Rugby East and PAC. New conferences can be added to the D1A competition with the majority approval of the conference commissioners and confirmation by the D1A Commissioner..

OUT-OF-CONFERENCE PLAY

It is encouraged that teams play out-of-conference matches, within D1A and other CRAA members (D1AA), during the season. Out-of-conference match results are weighted in the rankings system (explained below). While there are no out-of-conference match minimums, it is suggested that teams play two or more out-of-conference matches.

CROSS-OVER PLAY (OUTSIDE D1A, CRAA)

Due to geography and seasonality, there is a desire for teams to play cross-over matches that are outside of CRAA and D1A.

The following items must be acknowledged:

- The results of cross-over matches are considered in the ranking system based on strength of schedule as evaluated by the D1A competitions committee.
- Both teams must be active members of USA Rugby. An active policy is required and should be obtained prior to playing matches to maintain compliance with liability insurance for coaches, players and administrators.
- Referees for cross-over matches are not assigned by D1A or D1A's referee provider (Advantage Referees), nor are costs covered by D1A fees.
- Citing and discipline are not adjudicated by D1A Discipline. Citings for foul play should be referred to the discipline committee of the participating cross-over competition. D1A Discipline will make every effort to assist with hearings and honor decisions made by the adjudicators to uphold the integrity of the game within the laws of World Rugby.

POSTSEASON

Postseason structure and seeding will be managed by the competition committee with input from the conference commissioners. A postseason declaration must be made by September 15 (Fall) and January 15 (Spring).

Teams who declare for the postseason:

- Must not participate in any championship or bowls outside of CRAA and D1A (7s or XVs). If a team elects to play in a championship or bowl event outside of CRAA or D1A, they will not be eligible for postseason play and subject to competition committee sanctions.
- Must fulfill their postseason obligation. If a team does not fulfill its postseason obligation, they are subject to sanctions by the competition committee. These sanctions could result in removal from rankings, removal from the conference, and/or suspension from future postseason play in 7s and XVs.

RANKING SYSTEM

The competitions committee will be implementing a new system for rankings and seedings in 2022-2023. This is based on a computational process that generates a “power ranking” from weighted variables.

These weighted variables are:

- Conference win/loss results
- Out-of-conference win/loss results
- Strength of schedule
- Media poll
- Coaches poll
- Competitions committee poll

The competitions committee will publish Fall rankings for participating teams using the same process mentioned above. The CRAA D1A rankings will also be based on the power ranking system and only include teams who have declared for the CRAA D1A Spring Postseason.

SEASONALITY

Geography and seasonality are administered by the conference commissioners. Conferences have the authority to elect if they wish to play in the Fall, Spring or both. Regardless of the season, all rules, requirements, regulations and processes will remain consistent. A postseason declaration must be made by September 15 (Fall) and January 15 (Spring).

Conferences opting to play in the Fall will be eligible for the CRAA Fall Classic, a selection of bowl championships usually played the first weekend in December. Dates are subject to change due to venue availability.

The CRAA D1A National Championship will be held in the Spring. All D1A teams, regardless of elected season, will be eligible for the National Championship pathway if:

- A postseason declaration was completed by September 15 (Fall) and January 15 (Winter).
- They do not participate in any XVs championship or bowls outside of CRAA and D1A.
- They have fulfilled their reporting requirements (CMS, video, eligibility)
- They meet the rankings criteria set forth by the competitions committee

D1A teams that wish to compete in 7s, shall do so at their convenience. However, it is required that participation agreements for 7s tournaments do not bind the teams to another organization outside of CRAA D1A. They should be represented as a CRAA D1A team in any 7s competition, regardless of fees that allow another organization to use the name, image or likeness of the institution in their marketing materials.

MLR ACADEMY WINDOWS AND ACADEMY MATCHES

In working collaboratively with Major League Rugby (MLR), D1A has established windows to allow players to attend camps and academies. Our goal is to provide student-athletes with opportunities for development while remaining compliant with our eligibility rules.

There are two windows for student athletes to attend academy camps, clinics and other programming offered by the MLR.

Winter - The second Saturday in December through the second Saturday in January

Summer - June 1 through August 15

No student shall enter into any contractual agreements with any professional entity that can impact their eligibility, including the MLR or its affiliate academies.

While we encourage coaches to advance opportunities to play friendly matches to improve their teams, players and coaches, D1A teams shall not play MLR U18 academies. Due to the laws of the game as set forth by World Rugby and endorsed by USA Rugby, U18 teams shall not play adult teams (18+) for safety and liability reasons. If a U20 or U23 team has anyone under the age of 18 and they meet the requirements for "extraordinary" pathway talent, they must provide a waiver for that player which is endorsed by their legal parent or guardian and USA Rugby's General Manager of High Performance. No U18 player, regardless of waiver status, should be a front-row starter or replacement. Teams who violate this rule are subject to sanctioning by D1A and USA Rugby.

DISCIPLINE

PROCESS

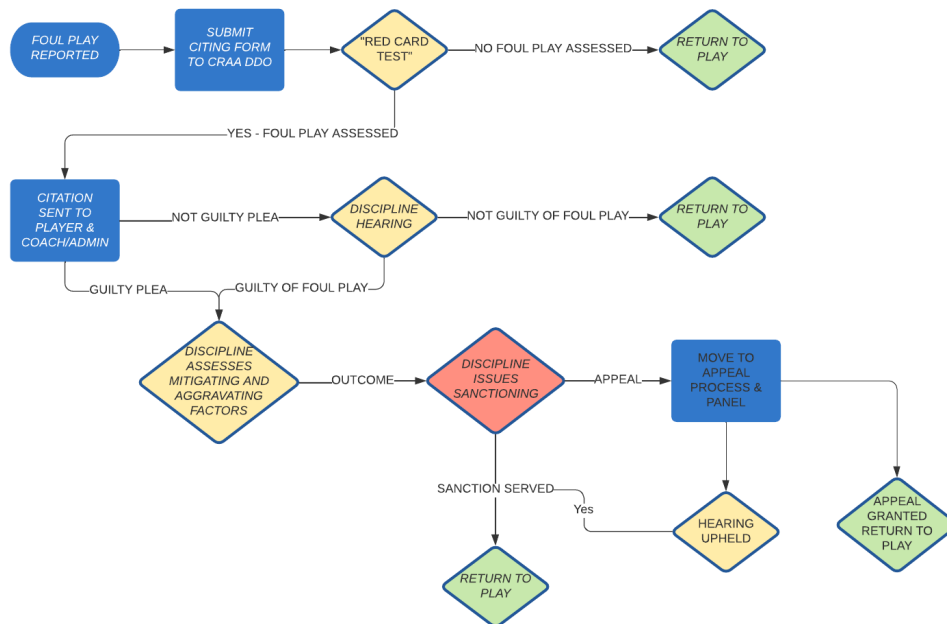
The College Rugby Association of America (CRAA) is a USA Rugby sanctioned competition that includes premier divisions within Men's and Women's Collegiate rugby. The competition includes Men's D1A, Women's D1 Elite, Women's D1 and Women's D2. CRAA is committed to creating the best possible experience for student-athletes, keeping commercial resources in the collegiate game, and creating experiences for our members to engage their academic institutions and alumni.

In regard to discipline, CRAA operates within the laws of the game of rugby, as prescribed by World Rugby and specifically Regulation 17 as it relates to foul play. However, a suitable adjustment to cater to the imperatives of the CRAA competitions and domestic structure has been adopted by CRAA EXCO and confirmed with USA Rugby as it relates to Regulation 17.21.2 and 17.21.3.

CRAA aims to have an efficient process to adjudicate discipline cases while honoring World Rugby Regulation 17.7.7 guidelines. All foul play reported by Advantage Referees will be reviewed by the Dedicated Disciplinary Officer.



CRAA DISCIPLINARY PROCESS WORKFLOW



CRAA has elected to use the “48 notice” guideline as it relates to citing notification and player notification as described in World Rugby Regulation 17.9.2 guidelines.

(c) the Host Union, Association or Tournament Organizer shall forward a copy of the report to the relevant parties within 48 hours of receipt. Such report shall clearly state that the Player has the right to challenge the Temporary Suspension but if the Player wishes to do so the Player must give notice of the challenge, ordinarily specifying reasons, within 48 hours of its notification to them. Such notice shall be duly recorded by the Host Union, Association or Tournament Organizer and shall be considered in the event of the Player subsequently being involved in any judicial hearing in relation to the accumulation of Temporary Suspensions and/or Citing Commissioner Warnings.

CITINGS:

CRAA citings will follow Regulations 17.9 in terms of the dedicated disciplinary officer (DDO) will act as the citing commissioner. All foul play reported by the match official or any authorized official will be reviewed by the DDO.

17.11 Matches where Citing Commissioners are not Appointed 17.11.1 For Matches where, in accordance with Regulation 17.8.3 or 17.8.6, it is not reasonably practicable for a Citing Commissioner to be appointed, the following shall apply:

(a) Each team participating in a Match, or any of its authorized officials, or its Union, may cite:

(i) a Player(s) for an act(s) of alleged Foul Play committed during that Match provided that such act(s) have not been detected by the Match Officials;

(ii) a Player for more than one incident of alleged Foul Play in the same Match;

(iii) and more than one Player in any Match.

DISCIPLINE COMMITTEE:

Appointment -

CRAA appoints the panel in accordance with Regulation 17.7

(a) An independent Disciplinary Committee or Judicial Officer. Where a Disciplinary Committee is appointed, it shall comprise three members: A Judicial Officer who shall chair the Committee together with two others who are Panel Members and/or Judicial Officers.

(b) An independent Appeal Committee or Appeal Officer. Where an Appeal Committee is appointed, it shall comprise three members: An Appeal Officer who shall chair the Committee together with two others who are Panel Members and/or Appeal Officers.

17.7.8 For all other Matches, the following shall be appointed:

(a) An independent Disciplinary Committee or Judicial Officer; and

(b) An independent Appeal Committee or Appeal Officer.

17.7.10 Where the Match does not fall under the World Rugby Appointment Scheme set out in Regulation 20, Members of Disciplinary and Appeal Committees and Citing Commissioners shall be appointed by the Host Union, Association or Tournament Organizer responsible for the implementation of disciplinary procedures and shall be appointed in accordance with the Core Principles set out at Regulation 17.3.1(e) and shall meet the following criteria:

(iii) Disciplinary Committees shall be chaired by Judicial Officers who shall be (i) legal practitioners or serving or retired judges, with appropriate rugby experience; or (ii) persons with appropriate training or experience as defined by the Union responsible for the implementation of disciplinary procedures in respect of the Match; and shall meet any additional requirements, including training qualifications, prescribed by the Union responsible for the implementation of disciplinary procedures in respect of the Match.

APPEALS:

Affected parties have the right to appeal the decision of the discipline committee. Such an appeal shall be heard in accordance with World Rugby Regulation 17.7 and have the following appeals committee appointments:

(v) Appeal Committees shall be chaired by Appeal Officers who shall be legal practitioners of at least three years standing or serving or retired judges, with appropriate rugby experience and experience as a Judicial Officer and shall meet any additional requirements, including training qualifications, prescribed by the Union responsible for the implementation of disciplinary procedures in respect of the Match.

(vi) Members of Appeal Committees (other than Judicial Officers) shall have experience as members of Disciplinary Committees and shall have recent knowledge of the laws and skills of the game and appropriate rugby experience preferably as a player, referee or coach and shall meet any additional requirements, including training qualifications, prescribed by the Union responsible for the implementation of disciplinary procedures in respect of the Match

ADJUSTMENTS

CONSIDERATIONS FOR NECESSARY ALTERATIONS:

Considering the differences in the international, professional and collegiate game, CRAA has reviewed Regulation 17.21 and specifically “Preamble C.” As published, CRAA has the opportunity to make necessary alterations to cater to the CRAA competition and collegiate rugby.

World Rugby Regulation 17.21.2

Disciplinary Committees and Judicial Officers shall ordinarily in their written decisions set out the reasoning for their findings, including the finding on culpability, how they have categorized the seriousness of the offense by reference to the features set out in Regulation 17.18.1, how they identified and applied any mitigating (17.19) and aggravating (17.20) factors and conclude with the resultant sanction, if any, imposed including, for the avoidance of doubt, the expiry date of the suspension setting out the number of weeks, or where the Player has a specific playing schedule that is known at the time of the imposition of the sanction, a list of the Matches (or Match weekends, rounds or dates where specific dates of fixtures have not yet been finalized) (subject, ordinarily, to a maximum of 2 matches in any 7-day period), for which the Player is suspended provided that, in any event, the Player would, on the best information available at the time of the decision, be scheduled to play in a Match which would meet the criteria set out in Regulation 17.21.3 below on each of the weeks taken into account and that an expiry date is stipulated for the suspension. Sanctions for Players in non-elite rugby settings should ordinarily be expressed in weeks for simplicity and clarity.

17.21.3 For the purposes of imposing a suspension, Disciplinary Committees and Judicial Officers shall take into account weeks in which there is a Match(es) that comply with each of the following criteria:

(a) until such time as the Player was suspended, the Player would otherwise have been scheduled to play in the Match, the burden resting with the Player to prove that he was scheduled to play. Where the Player was scheduled to play in more than one Match in a week (for example, a mid-week fixture) this week still only counts as one week of the suspension save where the rules of the particular tournament or tour from which the suspension arises and in which there is more than one Match per week allow for a suspension within that tournament or tour to be served in Matches;

(b) the Match is to be played between two teams in compliance with all of the Laws of the Game;

(c) where the Match is not part of a tournament, tour or Series of Matches that has been sanctioned in accordance with Regulation 16, the Match:

(i) is to be played between teams of equivalent level (for example, similar divisions or standards of play) and who play at the same or an equivalent level of the Game to the Player’s ordinary level;

(ii) is to feature the best players available to each team;

(iii) is to be played at a venue of the capacity and characteristics ordinarily used by teams of this level or standard;

(iv) is to be open to the public (and in the case of a Match involving professional teams, tickets will be sold);

(v) is scheduled within 4 weeks prior to an International Match, tournament, tour or Series of Matches which has been sanctioned in accordance with Regulation 16;

(d) where the Match is a playoff, final or similar Match for which the Player's team has not yet qualified, the Disciplinary Committee or Judicial Officer's decision may provide for alternative applications of the Player's sanction whereby the Match(es) in question shall be counted if the Player's team participates or not counted if the Player's team does not participate in which case the Match(es) in which the Player's team next participates is instead included in the sanction.

(e) where the Player is scheduled to play in a different form of the Game to that from which the sanction arises and those Matches in the other form of the Game fall within the period of the suspension, those Matches shall be taken into account for the purposes of the suspension if they meet all of the criteria set out in this Regulation 17.21.3 save that in the case of a Player whose suspension arises from a fifteen-a-side Match, only tournaments or Series of Matches in an abbreviated form of the Game which have been sanctioned in accordance with Regulation 16 shall be taken into account and, in such case, each tournament or Series of Matches played over a weekend shall be considered to equate to one week for the purposes of calculating the suspension of a Player arising from a fifteen-a-side Match.

Players shall not be free to participate in rugby activities which a Disciplinary Committee or Judicial Officer (or, as applicable, Appeal Committee or Appeal Officer) has considered do not meet the criteria in this Regulation 17.21.3 and thus have not been included as a week for which the Player is suspended.

World Rugby Regulation 17 Preamble C

This Regulation is drafted from the standpoint of the international governing body of the Game and Regulation 17 will be applied in its entirety to World Rugby and certain other international Matches, In recognition of the pyramid structure of international sport, the application and enforcement of this Regulation by Unions, Associations and Tournament Organizers within their respective jurisdictions may necessitate suitable adjustments to cater for the imperatives of their competitions and domestic structures and as applicable to accord with national legislation.

ISSUES SURROUNDING REGULATION 17.21.2 & 17.21.3 IN THE COLLEGIATE GAME:

Several variables in the CRAA competition call for alterations to Regulation 17.21.2 and 17.21.3

These variables include, but are not limited to:

Shortened competition schedule

Seasonality

Non-contiguous schedule of matches

XVs and 7s overlapping schedules in geographies

Due to these variables, Regulation 17.21.2 and 17.21.3 require a suitable adjustment to cater for the

imperatives of the CRAA competitions and domestic structure has been adopted by CRAA EXCO.

CRAA ADJUSTMENT TO REGULATION 17.21.2 AND 17.21.3:

As stated in Regulation 17 “Preamble C,” CRAA has the ability to necessitate suitable adjustments to cater to the imperatives of their competitions and domestic structures and as applicable to accord with national legislation.

Considering the variables in the collegiate game, CRAA has decided to adopt a suitable adjustment as it relates to Regulation 17.21.2 and 17.21.3.

A player sanctioning shall be considered in weeks, regardless if qualified matches are played within the period during the season.

*** Alternate Language - A player sanctioning shall be considered in weeks or matches within the period, whichever is completed first regardless if qualified matches are played within the period during the season. Only two qualified matches within a 7-day period will be counted towards the sanctioning. 7s competitions are considered one match.

Example: If a player receives a 6 week sanction for foul play, the clock starts 24-hours from the match where the player was cited and carries on for six weeks or 42 days and can return to play on the 43rd day.

VIDEO AND BROADCAST REQUIREMENTS

MINIMUM REQUIREMENTS FOR GENERAL VIDEO USE

(TEAM, LEAGUE AND DISCIPLINE USE)

All D1A teams are required to provide quality video for analysis and discipline purposes.

- A single angle video must be “shot” from a high ground perspective within the perimeter of the pitch.
- Film at high frame rates; preferably 60fps
- Proper video cameras are preferable over SLR or mobile devices with a lens supporting deep depth of field
- Wide shots are preferable over close-ups.
- Video must be uploaded to an online service (Vimeo, YouTube, etc.) within 24 hours of the conclusion of the match.

** Trace, Veo and Pixelot systems can be used but video must be viewable by league officials.

MINIMUM REQUIREMENTS FOR BROADCAST:

Production:

- 3-camera production with graphics package for scoreboard bug, dropdowns, takeovers and overlays. Replay is nice to have.
- Designated, elevated camera locations
- Power 220V 100A service; either portable genset or physical plant
- 100mb/sec dedicated ethernet feed or bonded LTE/5G portable uplink
- Commentators - either onsite or REMI (Remote Integration Model)

Facilities:


- World Rugby dimensions; The length of a rugby pitch can be between 94-100m (106-144m including the in-goal areas) and the width can be between 68-70m.
- Proper rugby lining with a best effort to remove/cover existing field markings that interfere in the field of play.
- Seating area in the camera arc (preferable between 22m)
- Well-kept grass or turf surfaces that show well on the broadcast.

GOALS FOR BROADCAST DISTRIBUTION:

- Top 10-15 D1A Men’s matches, professionally produced.
- Global OTT distribution availability without a paywall (TRN, RugbyPass or other).
- Local or institutional distribution to allow teams to generate revenue for their programs.
- Demonstrate value for sponsors - distribution + attendance
- Attempt to leverage MLR curtain raisers to raise the visibility of the college game, leverage facilities and broadcast, etc.

APPENDIX

CRAA GOVERNANCE

Link to pdf:  Bylaws - College Rugby Association of America-12451179-v3.pdf

These bylaws are currently being amended to allow the addition of ACR (D1AA) and ACRA to CRAA. Amended and approved bylaws will be distributed to conference commissioners and posted upon completion.

WAIVER REQUEST FORM

Link to pdf:  craa_eligibility_waiver_request_form.pdf

DISCIPLINE

Link to pdf:  CRAA DISCIPLINE PROCESS AND POLICIES 2022-2023

CRAA NIL Guidelines

Link to pdf:  NIL GUIDELINES.pdf

ELIGIBILITY DROPBOX

<https://www.dropbox.com/request/xKA8odfTCdGnpbaNMcdg>

ELIGIBILITY FORMS

Link to:

<https://docs.google.com/forms/d/e/1FAIpQLSeMsxJ6AWJh8QF2R90nXQkD3JcoedcPNa4Pj5hqfnbIZOPcmw/viewform>

Link to pdf:  U18 PLAYER RELEASE.pdf